



**WATER
RESILIENCE
COALITION**



Collective Action for a Water Resilient World

WHO WE ARE

Global companies and their CEOs
joining forces to accelerate
progress against the global water
crisis



Our Origin



**WATER
RESILIENCE
COALITION**



- ▶ Identify and accelerate investments in **solutions to the water-climate crisis**
- ▶ **Collective action** to build water security and resilience at scale in stressed regions
- ▶ Aligned **quantifiable and time-bound** water commitments at the enterprise and river basin level

2010s

Several leading CEOs saw the scale of water action did not meet the scale of the water crisis

2020

7 companies partner to found the WRC, growing 4x in 2 years

2030

Commitments half fulfilled

2050

All commitments fulfilled



**WATER
RESILIENCE
COALITION**



What is at stake?

Global Annual Economic Losses Attributed to Water Risks (USD)

Category	Estimated Annual Loss (USD)	Source / Notes
Flood Damage (urban, coastal, riverine)	\$120 billion	World Bank, OECD
Droughts (agriculture, energy, GDP loss)	\$80 billion	FAO, IMF
Water Pollution (healthcare, ecosystem)	\$55 billion	WHO, UNEP
Infrastructure Failures (aging systems)	\$45 billion	Global Water Partnership
Industrial Disruption (water scarcity)	\$35 billion	CDP (Carbon Disclosure Project)
Supply Chain & Operational Risk	\$30 billion	WRI, McKinsey
Climate-linked Water Stress	\$100–200 billion	IPCC Scenarios, depending on trajectory

Key insight

*Water risks already account for **\$465–565 billion** in annual economic losses, with the potential to increase dramatically due to climate change and population growth.*

Why create the Water Resilience Coalition?

Companies came together to realize the need for a coordinated and collective effort

Individual Efforts Aren't Enough

Water risks are systemic, interconnected, and transboundary—they affect entire watersheds, economies, and ecosystems. While many companies are taking action, fragmented, isolated initiatives cannot address the scale and complexity of the challenge.

Only 53% of companies have set site-level water targets, and 4% set water targets for their supply chain. (CDP, 2023 and 2024)

Most corporate water stewardship efforts remain limited in scope and location.

70% of global freshwater withdrawals are used for agriculture, an activity largely beyond the control of individual businesses. (FAO, 2022)

Solving water stress requires coordination across sectors and supply chains.

By 2050, over 50% of the global population will live in water-stressed regions. (UNESCO, 2023)

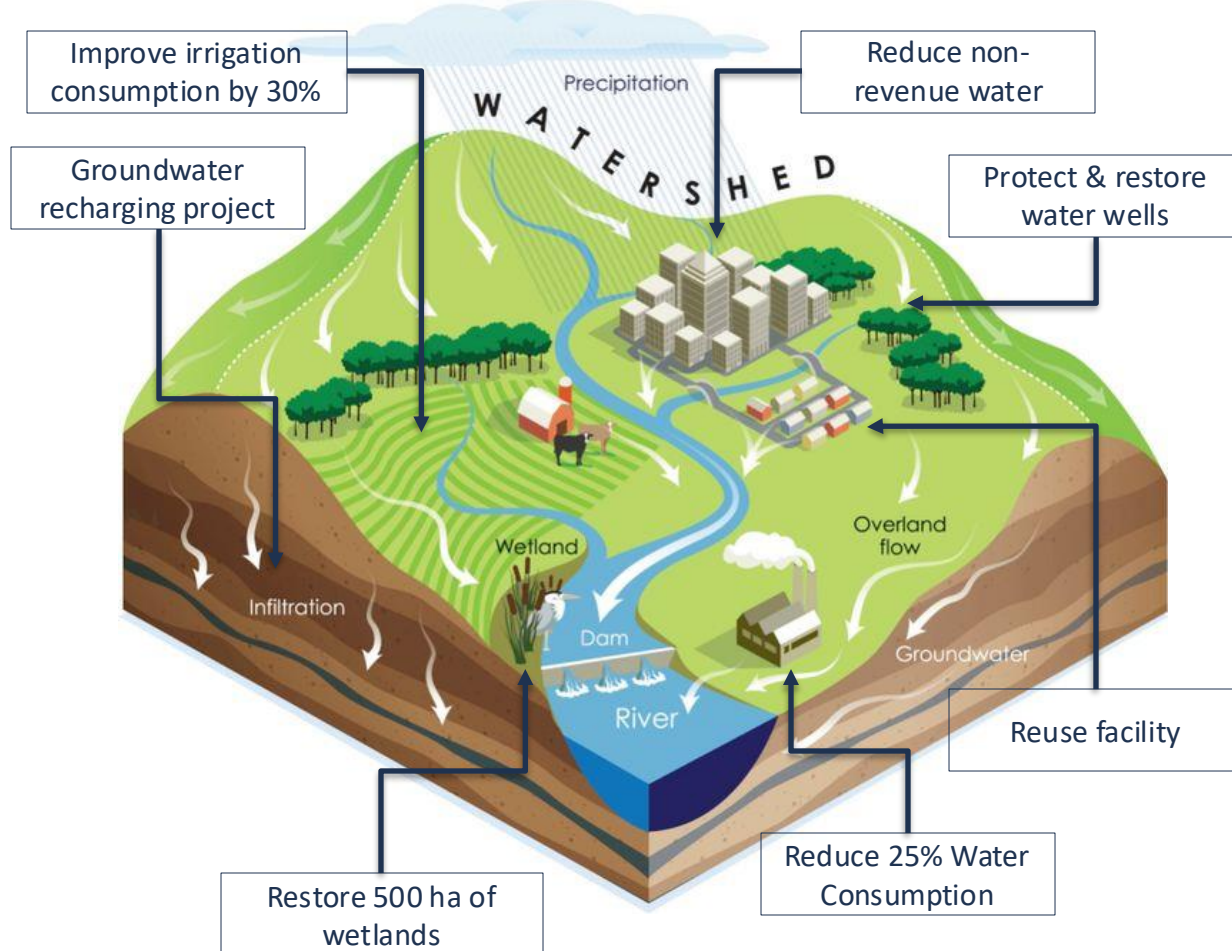
The scale of risk demands action from governments, industries, and communities together.

Only 22% of watersheds globally have any form of multi-stakeholder governance in place. (WRI, 2022)

Lack of coordinated basin-level governance hinders progress.

What are we doing? How are we optimizing for scale?

Helping companies, NGOs, and governments move better together at the basins



Establishing a neutral party to facilitate alignment between stakeholders



Mapping key stakeholders and discussing synergies between their actions



Establishing timebound targets and progress report



Building a portfolio of tailored collective actions and shared solutions to gain scale, optimize costs, and achieve a high impact



Using standard metrics + reporting system to allow the aggregation of the impact

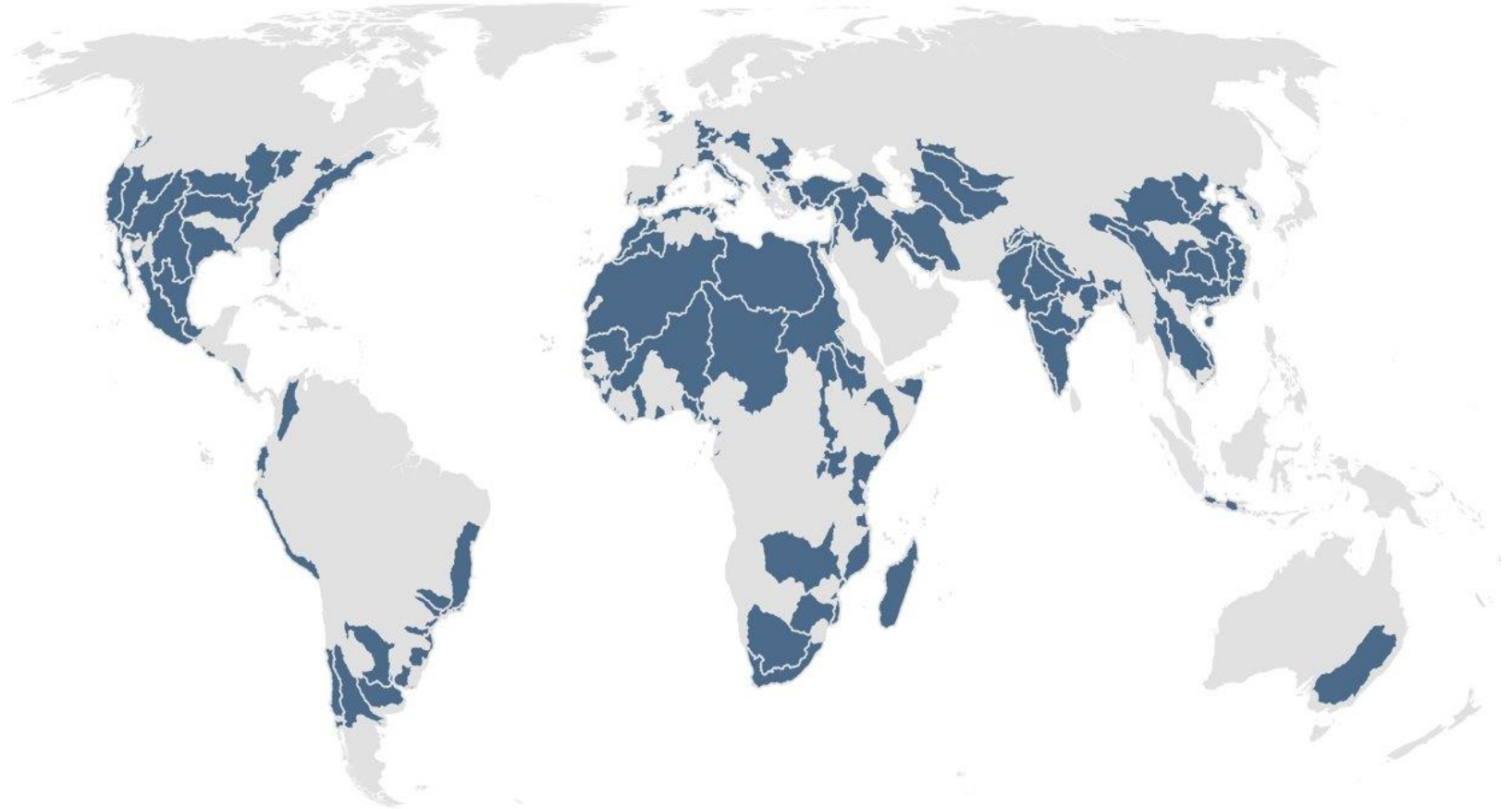


Where are we landing? And what are our goals?

Our top 100 priority basins for collective actions

We will achieve positive **water impact in over 100 water-stressed basins** that support over 3 billion people.

We will enable equitable and resilient water access, sanitation, and hygiene (**WASH**) for over **300 million people**.



The WRC and partners have analyzed and curated a list of 100 priority basins to scale collective action





What is currently happening at the 100 basins in a snapshot




Collaborative Steps									
Country	Basin Name	Mapping Stakeholders	Recruiting Champions	Establishing Collaborative Structure	Collaborative Kickoff	Diagnostic & Target Setting	Creating Project Roadmap	Implementing Projects	Monitoring Progress & Basin Health
United States	California (North Pacific 446)								
United States	Upper Mississippi (Mississippi 419)								
United States	Lower Mississippi (Mississippi 427)								
United States	Missouri								
United States	Arkansas and White								
India	Godavari								
Mexico / United States	Rio Bravo / Rio Grande								
Italy	Tyrrhenian Sea, Ligurian Sea								
India	Yamuna								
Kenya	Tana (Indian Ocean 189)								
Mexico	Rio Lerma (North Pacific 455)								
Indonesia	Java								

 Complete
 In progress
 Pending

What is currently happening at the 100 basins in a snapshot

Collaborative Steps									
Country	Basin Name	Mapping Stakeholders	Recruiting Champions	Establishing Collaborative Structure	Collaborative Kickoff	Diagnostic & Target Setting	Creating Project Roadmap	Implementing Projects	Monitoring Progress & Basin Health
Brazil	Tiete (PCJ)								
South Africa	Berg, Breede, Olifants, South & West Coasts (Indian Ocean 160)								
Spain	Guadalquivir								
Portugal/ Spain	Barbate, Guadalete, Mira, Sado, Tagus (Iberian Peninsula 615)								
Italy	Po								
United Kingdom	Severn & Thames (North Atlantic 604)								
Western Europe	Rhine 635								
Bangladesh	Meghna								

-  Complete
-  In progress
-  Pending

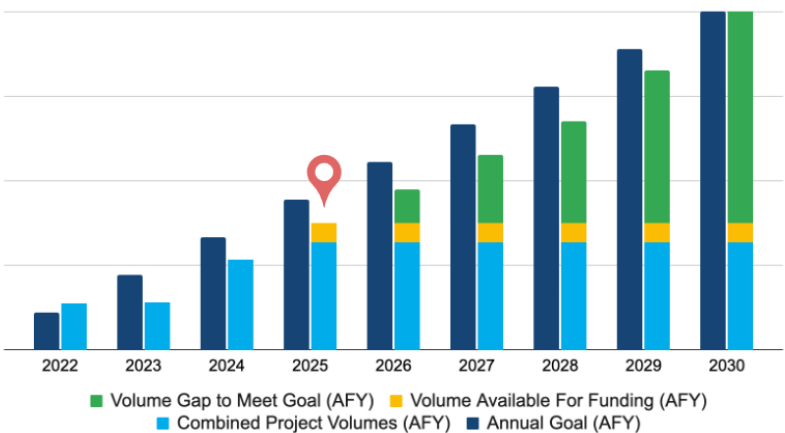


The California Water Resilience Initiative (CWRI) example

Goal is by 2030, Reduce, Reuse, and Restore 1M Acre-Feet / Year (1.2M Liters / Year)

175,000 AFY (17.5%)
achieved to date

Progress To 2030 Goal (1 Million Acre-Feet)



LEADERSHIP



PROJECTS



Agriculture
Modernization Fund
with Netafim



Sustainable Water
Impact Fund II
with RRG
balance sheet investment



Sacramento
River Restoration
*with River
Partners*



Kern Watershed
Restoration
*with Trout
Unlimited*



Esperanza Elementary
School Greening
*with LA Neighborhood
Land Trust*

SAMPLING OF COMPANIES ENGAGED



Building a Portfolio of Water Projects

Example from California



Basin Opportunities - North Pacific (446) (San Joaquin & Sacramento)

[Click here to view the projects](#)

[Select Different Basin](#) ▼

Project	Implementer	Volumetric Benefits	Water Quality Benefits	WASH Benefits	Total Project Cost	Minimum Investment	Recruiting Status	Project Details
Battle Creek Restoration Project - Shasta County Kremer Property	River Partners Network	✓			\$1,380,000	\$250,000	Accepting Funding	 
Colusa Bend Restoration	River Partners Network	✓			\$7,567,000	\$250,000	Accepting Funding	 
Colusa Floodplain Reconnection Project - R&J Orchard	River Partners Network	✓			\$8,763,000	\$250,000	Accepting Funding	 
Crows Landing Habitat Restoration	River Partners Network	✓			\$8,705,500	\$250,000	Accepting Funding	 
Feather River Floodplain and Side Channel Reconnection (Yuba)	River Partners Network	✓			\$13,225,000	\$250,000	Accepting Funding	 
Hidden Valley Ranch	River Partners Network	✓			\$13,771,250	\$250,000	Accepting Funding	 

WRC Dashboard

Summarizing risks, goals, progress, and projects



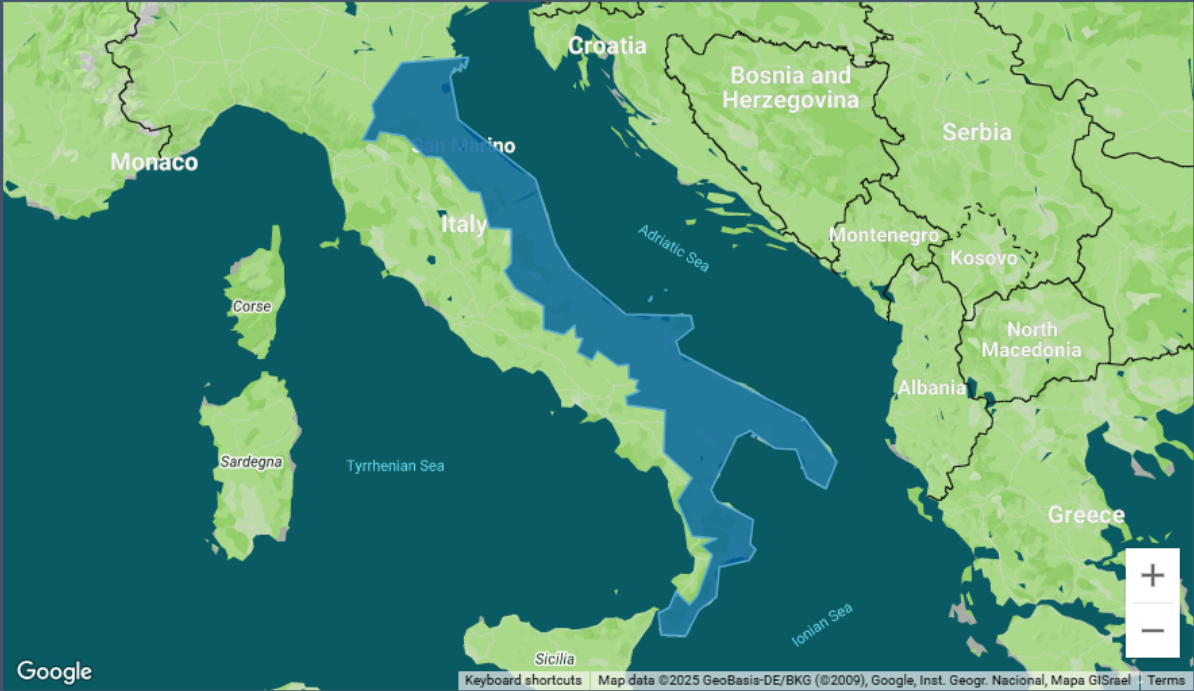
English (United States)



Welcome, Todd | UNGC Member

Home Reports Reporting Portfolio Project Details NPWI Company Dashboard Administration Company Dashboard About

Adriatic Sea (652) (Gravina di Picciano)



Projects and Recruiting

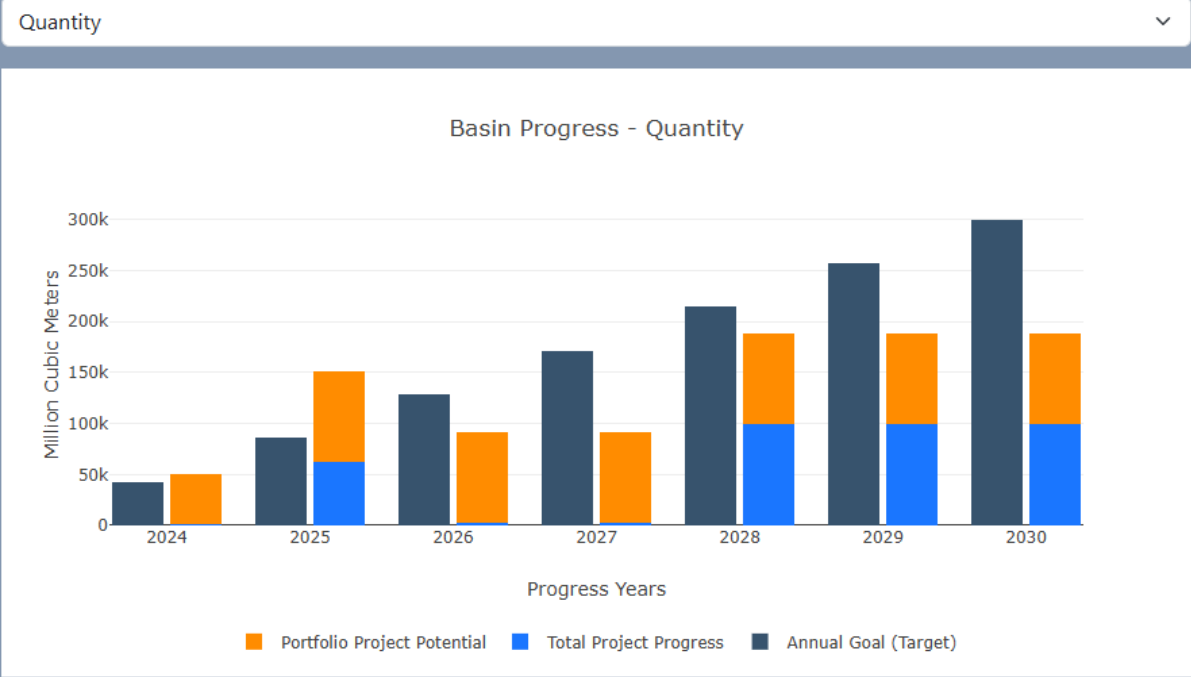
Basin Recruitment

Basin Recruitment Progress



Basin Progress

Basin Progress



Basin Project Portfolio

Project	Project Status	Funding
Test project	Active	Accepting Funding
Test Project Water Enhancement	Planning	Funding Closed
Test Portfolio Project Under Aidvin test company	Planning	--

Our value add

Summary of how the WRC supports member companies

- **Helping members achieve their water targets** by sharing a portfolio of curated collective action opportunities and facilitating engagement of multiple companies to scale the outcomes.
- **Reducing shared water risks at basins of interest** by creating a common goal and a pathway to achieve it, where investments are optimized to significantly scale positive impact to really change basin conditions
- **Bringing stakeholders together** by establishing neutral collective action management platforms (e.g., Collaboratives) where companies, NGOs, and the public sector can meet to discuss partnerships and mutual support without any bias
- **Tracking outcomes in a standard way** by improving a collective action reporting tool, part of the WRC 100 Basins App, to curate and publicly report outcomes from on-the-ground implementing partners and aggregating them by basin to understand our total progress against the established targets
- **Providing information on basin conditions and their changes** by developing, in partnership with the European Space Agency and 52 Impact, a GIS + AI monitoring platform for each of the 100 basins, where users will be able to check current and future-looking conditions
- **Supporting the development and scaling of financial mechanisms to support water projects** by working with fund managers that are building opportunities to use the balance sheet to scale investments in water with financial returns
- **Piloting and implementing innovative solutions** by working with our members and organizations like the 100 + Accelerator and World Economic Forum to map new solutions for water and use our basin platforms to help pilot them
- **Building a senior leadership network for water** by bringing CEOs, CSOs, and other C-Level representatives of companies to meet twice a year to discuss water strategies and trends, and to engage other players to scale action, to become Champions

The Water Resilience Coalition

40 Companies from all sectors, representing over \$5 trillion in market cap

Leadership Committee



Members



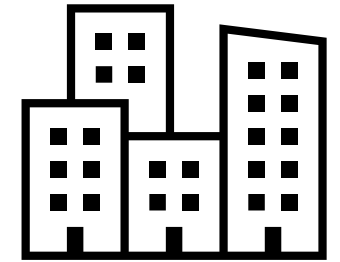
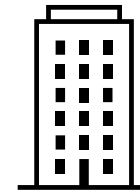
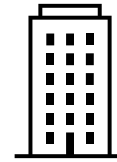
Partners



What is our funding structure?

Member contributions make the work of the WRC possible

Note: Annual fees for participation in the Water Resilience Coalition are in addition to, and cannot substitute for, annual participation fees in the UN Global Compact or its Country Networks.



Company Revenue (\$USD)		<\$1B	\$1-5B	\$5-10B	\$10B+
CSOs Advisory Board	Annual Commitment first 3yrs	\$100K	\$100K	\$100K	\$100K
	Annual Commitment	\$15K	\$20K	\$30K	\$30K
Member Companies					

What do you commit to when you join?

Positive impact on your operations and supporting us to achieve the same at the basin level

Achieving Net Positive Water Impact (NPWI)





**WATER
RESILIENCE
COALITION**



Join us!

André Ramalho

WRC Lead

Pacific Institute / CEO Water Mandate
avramalho@pacinst.org

Mark Cassalia

WRC Business Engagement Manager

Pacific Institute / CEO Water Mandate
mcassalia@pacinst.org





**WATER
RESILIENCE
COALITION**



APPENDIX I - Governance

How is WRC related to the UNGC?

Our main institutional governance

UN Global Compact

World's largest corporate sustainability initiative



United Nations
Global Compact

CEO Water Mandate

Water stewardship initiative of the UN Global Compact



CEO
WATER
MANDATE

Water Resilience Coalition

Leadership platform of the CEO Water Mandate

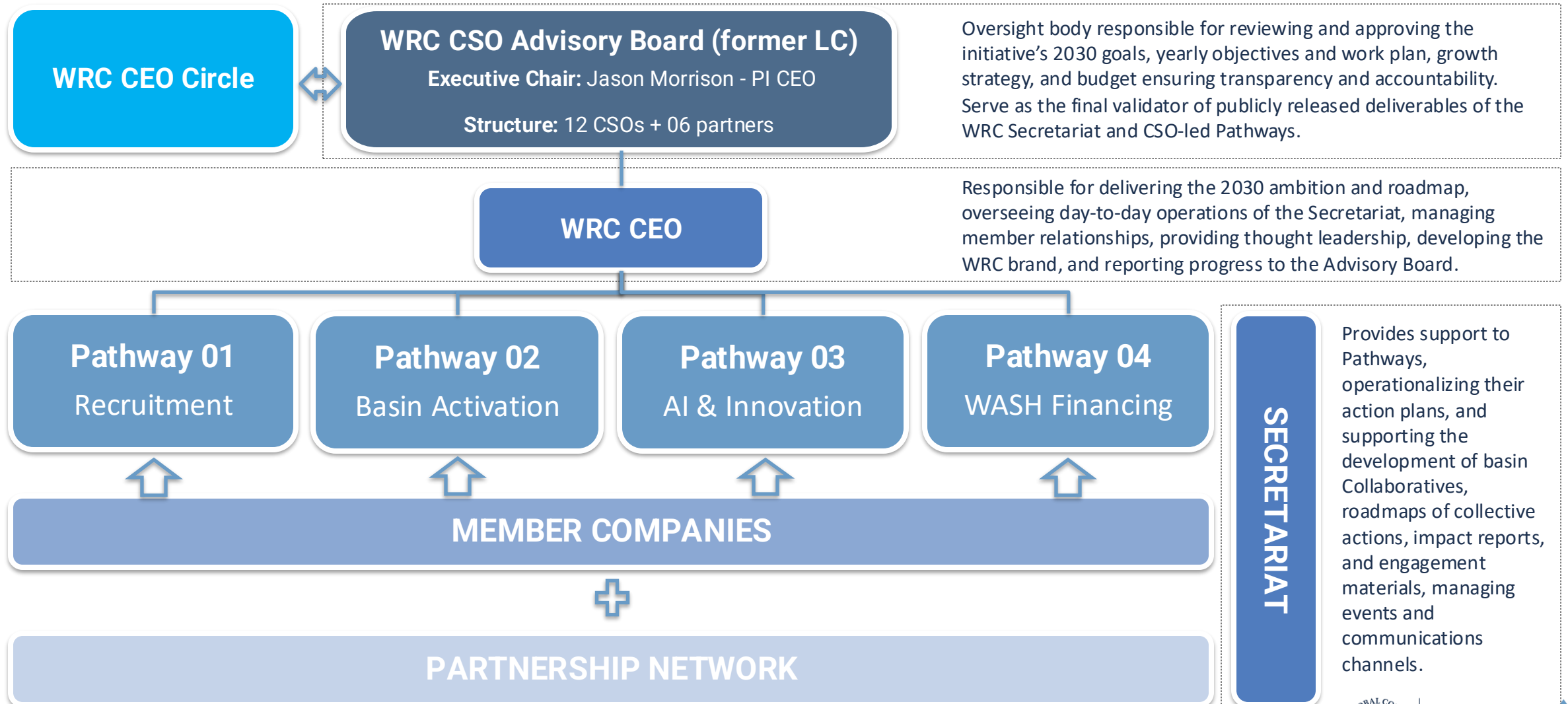


WATER
RESILIENCE
COALITION



How is our structure looks like?

The WRC governance model





**WATER
RESILIENCE
COALITION**



APPENDIX II – Pathways

How we operate

Pathway 01 – Recruitment & Communications

Main Goal: Grow WRC to 150 to achieve 2030/2050 WRC Ambition			Team
<p>Objective: Establish a multipronged recruitment strategy that utilizes the influence of the WRC members and storytelling to achieve the WRC's recruitment targets.</p> <p>Action: CSOs will develop, drive and evaluate the impacts of the strategy. CSOs will leverage Comms & Marketing resources to refine and build the value proposition of WRC, including through storytelling .</p> <p>Outcome: Strategically position the WRC as the leading corporate water stewardship coalition mobilizing collective action and attaining collective outcomes within a basin.</p>			<p>CSO Chair: TBD</p> <p>CSO Co-Chair: TBD</p> <p>WRC Lead: Mark Cassalia & Raquel Ortuno</p> <p>Members engaged: TBD</p> <p>Task forces: Comms & Engagement</p>
2025 Goals	2025 Activities & Deliverables		
<ul style="list-style-type: none"> Grow the membership by 14 and increase key partners and their active engagement rate Fill CSO Advisory Board (CAB) – 06 positions Improve the value-add narrative of WRC to support recruitment 	<ul style="list-style-type: none"> Approve the WRC Events Strategy Support UNGA C-Suite Event + Task Force Mtgs Help establish an official CSO Water Network Revise and enhance recruitment materials Help drive recruitment strategy Advise on WRC partner strategy 		
Budget and resources	KPIs	Progress to date	
Members only.	<ul style="list-style-type: none"> N° WRC Members N° Companies pitched WRC N° People reached via comms & events N° Active partners engaged 	<ul style="list-style-type: none"> 40 members 07 LC members 18 official partners 	

Pathway 02 – Basin Activation

Main Goal: Mobilize 100% participation in 24 Critical Basins		Team
<p>Objective: Accelerate water resilience and derisking efforts in 24 critical basins worldwide.</p> <p>Action: CSOs and WRC will drive and deploy the basin Champion model, developing partnerships, implementing sustainable water management solutions, and leveraging advanced technologies.</p> <p>Outcome: Establish a global benchmark for sustainable basin management, achieve significant water efficiency, and derisk operations in critical basins.</p>		<p>CSO Chair: Ingrid DeRyck (ABInbev)</p> <p>CSO Co-Chair: TBD</p> <p>WRC Lead: André Ramalho</p> <p>Members engaged: TBD</p> <p>Task forces: Collaboratives, Metrics</p>
2025-2026 Goals	2025 Activities & Deliverables	
<ul style="list-style-type: none"> Recruit over 20 basin champions Establish Collaboratives in 24 basins (proposal in place and funding secured), with 12 directly led by WRC All collective action projects and companies are registered in the Water Action Hub 	<ul style="list-style-type: none"> Collective action impact tracking platform Basin diagnostic & monitoring system Collaborative structure set in 24 basins 	
Budget and resources	KPIs	Progress to date
Members only.	<ul style="list-style-type: none"> N° of Basin Champions N° of Collaboratives implemented N° of Collective Actions (C.A.) % Members engaged in C.A. 	<ul style="list-style-type: none"> Water saved – operational efficiency: 394.9M m3/year Water Reclaimed/Reused: 1B m3/year Water Replenished: 2.2B m3/year % members removing pollutants beyond legal: 51% Ha conserved & restored: 1.2M ha



Pathway 03 – Technology & Digital Innovation

Main Goal: Advance water resilience and efficiency with Technology and Digital			Team
<p>Objective: Establish a task force dedicated to leveraging new technologies to transform water management in priority basins.</p> <p>Action: WRC & CSO-led task force will engage development partners to align funding and ensure strategic deployment of resources to address urgent basin challenges.</p> <p>Outcome: Transforming water management through innovation to set a new industry standard for efficiency and resilience, fostering cross-industry collaboration, and achieving NPWI by 2050.</p>			<p>CSO Chair: TBD</p> <p>CSO Co-Chair: TBD</p> <p>WRC Lead: Todd Player</p> <p>Members engaged: TBD</p> <p>Task forces: Innovation & Water Action Hub</p>
2025 Goals	2025 Activities & Deliverables		
<ul style="list-style-type: none"> Basin Monitoring (BM) for 25 priority basins Digital Twins/AI Models for Predicting Future State of 25 priority basins Identify 10 new innovations from partnership programs Expand partnership with ESA 	<ul style="list-style-type: none"> Convene 02 virtual demonstrations per year of curated innovations Establish new cohorts of entrepreneurs in partnership with existing programs from WRC members and strategic partners, and actively engage as advisors 		
Budget and resources	KPIs	Progress to date	
Members only.	<ul style="list-style-type: none"> N° of basins with live monitoring N° of basins with predictive models N° of new innovations piloted/scaled 	<ul style="list-style-type: none"> Basin monitoring methodology pilot ongoing in Upper Mississippi Basin Predictive WASH model under development 	

*ESA provides 50% match through Netherlands Space Office to 52impact directly to match funds they secure for paid services provided directly to WRC member companies and Pacific Institute.

Pathway 04 – Investment

Main Goal: Invest \$2B in Water Resilience (including WASH)		Team
<p>Objective: Establish a task force to mobilize \$2B in impact investments for water resilience (including but not exclusive to Water, Sanitation, and Hygiene (WASH) - to advance initiatives in priority basins</p> <p>Action: CSOs will lead outreach and engagement efforts, leveraging existing partnerships and industry influence to attract key companies.</p> <p>Outcome: Secured \$2B in investments to improve water resilience and access to clean water, sanitation, and hygiene, driving long-term basin health & economic outcomes in underserved communities.</p>		<p>CSO Chair: Emilio Tenuta (Ecolab)</p> <p>CSO Co-Chair: TBD</p> <p>WRC Lead: Cheryl Hicks</p> <p>Members engaged: TBD</p> <p>Task forces: Investment Portfolio</p>
2025 Goals	2025 Activities & Deliverables	
<ul style="list-style-type: none"> • Increase the percentage of companies investing in the portfolio by 25% • Engage XX partners and secure \$XX in investment (TBD) 	<ul style="list-style-type: none"> • Develop governance & scale up strategy • Map basin investment priorities • Develop a list of strategic targets • Expand portfolio of partners/funds • Develop pitch decks for corporate investment decision-making 	
Budget and resources	KPIs	Progress to date
Members only.	<ul style="list-style-type: none"> • \$ Invested by members • \$ Pipeline size • % of members engaged • N° of active funds 	<ul style="list-style-type: none"> • People reached with WASH: 225.5M¹ • \$ invested by WRC members: 160M (1.7B)²

¹Reported by members – include media campaigns, impact from utilities, and cumulative data from before 2020

²Pipeline size